

INSTRUCTION MANUAL

Operation instructions:

Table Timer was built with a robust mechanical movement. So in some time positions it could occur that the reset function works a little bit difficult. To proceed the reset please proceed with the following steps:

- 1) Please push a few times the Start- and the Stop- Button.
- 2) Please push the Reset button. Now the reset should work.

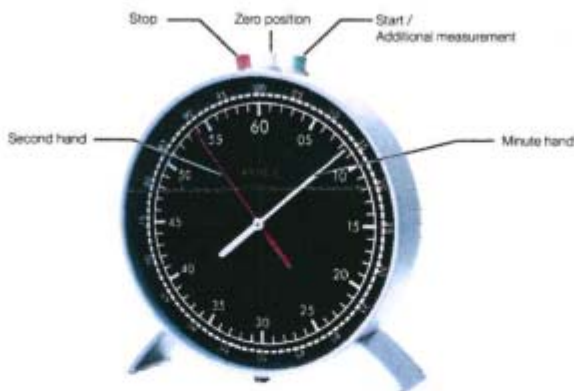
Please notice the following precautions:

- 1) The Table Timer should be only placed on solid ground to avoid damages through dropping.
- 2) Please avoid very strong pushing on the Buttons.
- 3) Please avoid permanent insolation on the Table Timer.
- 4) Please do not overwind the movement. If you feel a resistance the movement is fully wound up.

Please notice that all damages on the glass, case (incl. the stand) and through wrong use are not included within the guarantee.

Time measure:

Please wind up the movement anticlockwise with the key on the back if the movement is not wound up. Afterwards you can start the time measure.



Green Pusher: Starts the time measurement / Addition after intermediate stop

Red Pusher: Stops the time measurement

White pusher: Reposition of the hands to the zero position